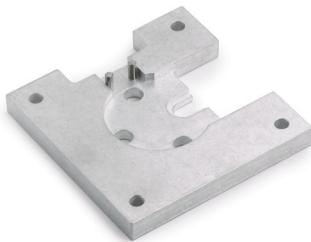


## 1009 Pressure Gauge Tools

### Overview

Section	Part Number	Description	Notes
Tools	101B220-02	2½" 1009 Nest Tool (for holding gauges)	
	101B221-02	2½" Ring Tightening Tool	
	101B220-01	3½" 1009 Nest Tool (for holding gauges)	
	101B221-01	3½" Ring Tightening Tool	
	1230	Plunger Body Bolt and Plug for ¼" NPT Throttle Plug Insertion	
	1231	Tool to insert Throttle Plug on ½" NPT	
	188A101-01	Pointer Staker	
	112A381-01	Pointer Puller Screw/Pin (For pointer Removal)	Must be purchased together
	292A133-01	Pointer Puller Body (For pointer Removal)	
3220	3220	Hand Jack Set	
1105T	1105T	Tool Kit	
1105T additional accessories	266A106-01	Pin Vise for Reamers	
	266A107-01	1105RF Reamer for Special small holes (Max Diameter .028")	
	266A107-02	1105RE Reamer for 3½" and larger gauges (Max Diameter .052")	
	266A107-03	1105RD Reamer for 4½" and larger gauges (Max Diameter .070")	
	266A107-04	1105RB Reamer for 4½" and larger gauges (Max Diameter .082")	
	266A107-05	1105RA Reamer for 4½" and larger gauges (Max Diameter .098")	
	266A109-01	1105W- Wiggler	
	266A108-01	11005TW- Tweezer	

### 2½" Ring Tightening Kit



#### 101B220-02

2½" 1009 Nest Tool (for holding gauges)



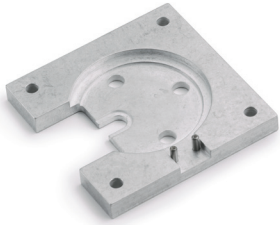
#### 101B221-02

2½" Ring Tightening Tool

Location	Fir-189
----------	---------

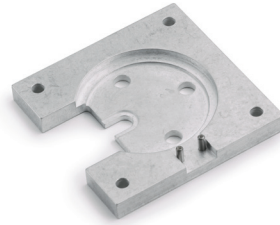
## 1009 Pressure Gauge Tools

### 3½" Ring Tightening Kit



#### 101B220-01

3½" 1009 Nest Tool (for holding gauges)



#### 101B221-01

3½" Ring Tightening Tool

Location	Flr-189
----------	---------

### 1230



Plunger Body Bolt and Plug for ¼ NPT Throttle Plug insertion

Location	Flr-738 Bin Q08
----------	-----------------

### 1231



Tool to insert Throttle Plug on ½ NPT

Location:	Flr-738 Bin K19
-----------	-----------------

### 188A101-01



Pointer Staker

Location	Flr-738
----------	---------

## 1009 Pressure Gauge Tools

### Pointer Remover



#### 112A381-01

Pointer Puller Screw/Pin (For pointer removal)  
\*Purchase with 292A133-01

Location Flr-738 Bin M24

#### 292A133-01

Pointer Puller Body (For pointer removal)  
\*Purchase with 112A381-01

Location Flr-738 Bin M22

### 3220



#### Hand Jack Set

Location Flr-738 Bin Q66

### 1105T



Tool Kit (Includes part numbers 3220,  
266A106-01, 266A107-01 to 05, 266A109-01 &  
266A108-01)

Location: Flr-738 Bin Q07

### 266A106-01



#### Pin Vise for Reamers

Location Flr-738

### 266A107-01



1150RF Reamer for Special small holes  
(Max diameter 0.028"

Location Flr-738

## 1009 Pressure Gauge Tools

266A107-02



1150RE Reamer for 3½" & larger gauges  
(Max diameter 0.052")

Location	Flr-738
----------	---------

266A107-03



1150RD Reamer for 4½" & larger gauges  
(Max diameter 0.070")

Location	Flr-738
----------	---------

266A107-03



1150RB Reamer for 4½" & larger gauges  
(Max diameter 0.082")

Location	Flr-738 Bin Q08
----------	-----------------

266A107-05



1150RB Reamer for 4½" & larger gauges  
(Max diameter 0.098")

Location:	Flr-738 Bin K19
-----------	-----------------

266A109-01



1105W - Wiggler

Location	Flr-738
----------	---------

266A108-01



1105TW - Tweezer

Location	Flr-738
----------	---------