

## Data Sheet

### Gauge Valve - V01 Series

#### FEATURES

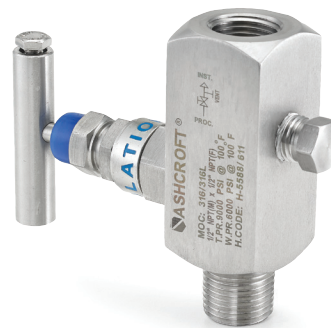
- Isolates process from instrument assembly
- 316L Stainless steel construction
- Externally adjustable gland
- Reinforced gland body protection
- Blowout protection
- Non-rotating needle provides bubble tight shut-off

#### TYPICAL USES

- Oil & Gas Industry
- Chemical Industry
- Power Plants



Style A



Style B  
(with vent plug)

#### SPECIFICATIONS

Process Conn:	½ NPTM, ½ NPTF
Instrument Conn:	½ NPTF
Construction:	316L Stainless steel
Max Pressure	
Rating:	6000 psi (414 bar) at 100°F (38°C)

#### COMPONENTS

#### MATERIAL

##### Wetted

Body	316L Stainless steel
Gland body	316L Stainless steel
Spindle	316L Stainless steel
Needle tip	316L Stainless steel
Washer	316L Stainless steel
Gland seal	PTFE
Plug ¼ NPT (M) (style B only)	316L Stainless steel

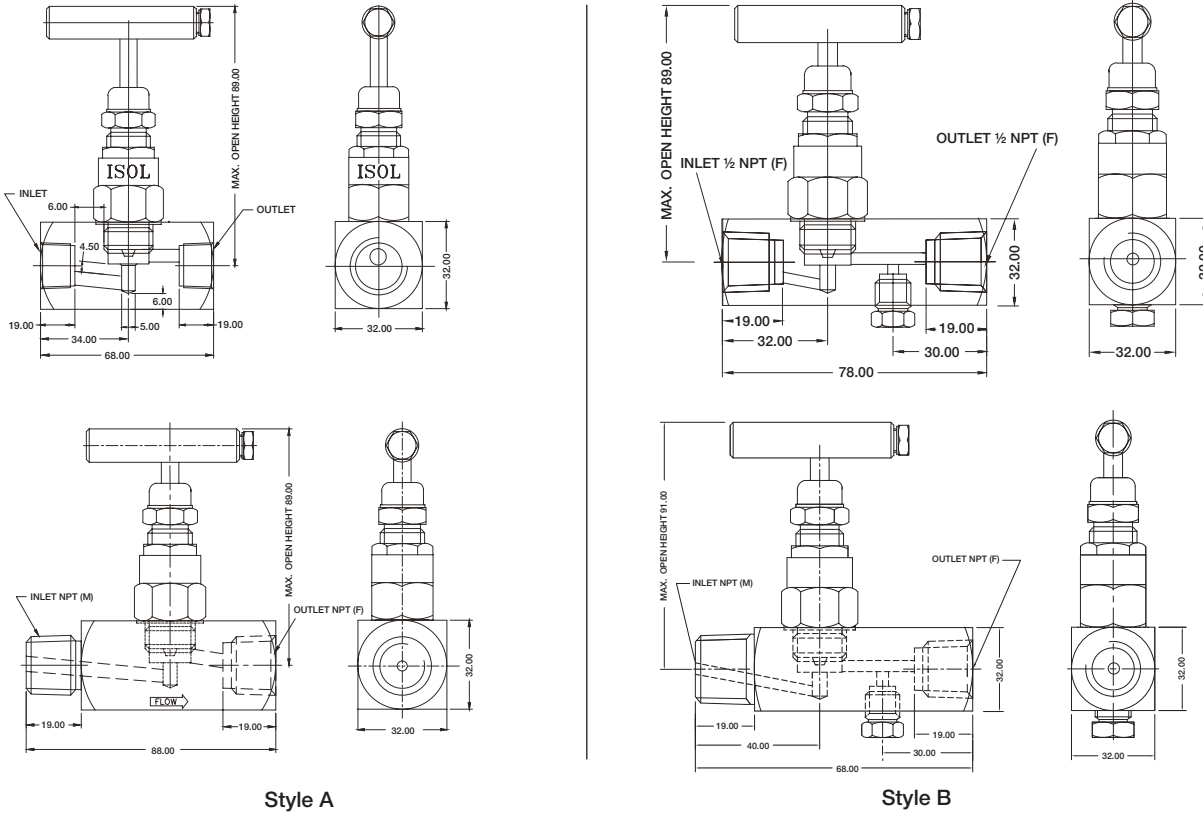
##### Non-Wetted

Gland retainer	304 Stainless steel
Check nut	304 Stainless steel
Handle	304 Stainless steel
Lock pin	304 Stainless steel
Dust cap	P.V.C.

- PTFE Packing
- Dust cap protects internals from contaminants
- ¼ NPT Vent port with pipe plug (Style B only)

## Gauge Valve - V01 Series

### DIMENSIONS (dimensions are decimal inches)



Style A

Style B

### ORDERING CODE

Example: 04 V01 1VA SS 50 XP7

Process Connection	Series Code	Version	Material	Instrument Connection	Options
04-1/2 NPT Male	V01-Valve	1VA-1 Valve style A	SS-316SS	50-1/2 NPT Female	
50-1/2 NPT Female	V01	1VB-1 Valve style B	SS	50	
					HY-Hydrostatic testing
					6B-Cleaned for oxygen service
					NH-Stainless steel tag
					P7-Compliance with power piping ASME B31.1
					XP7